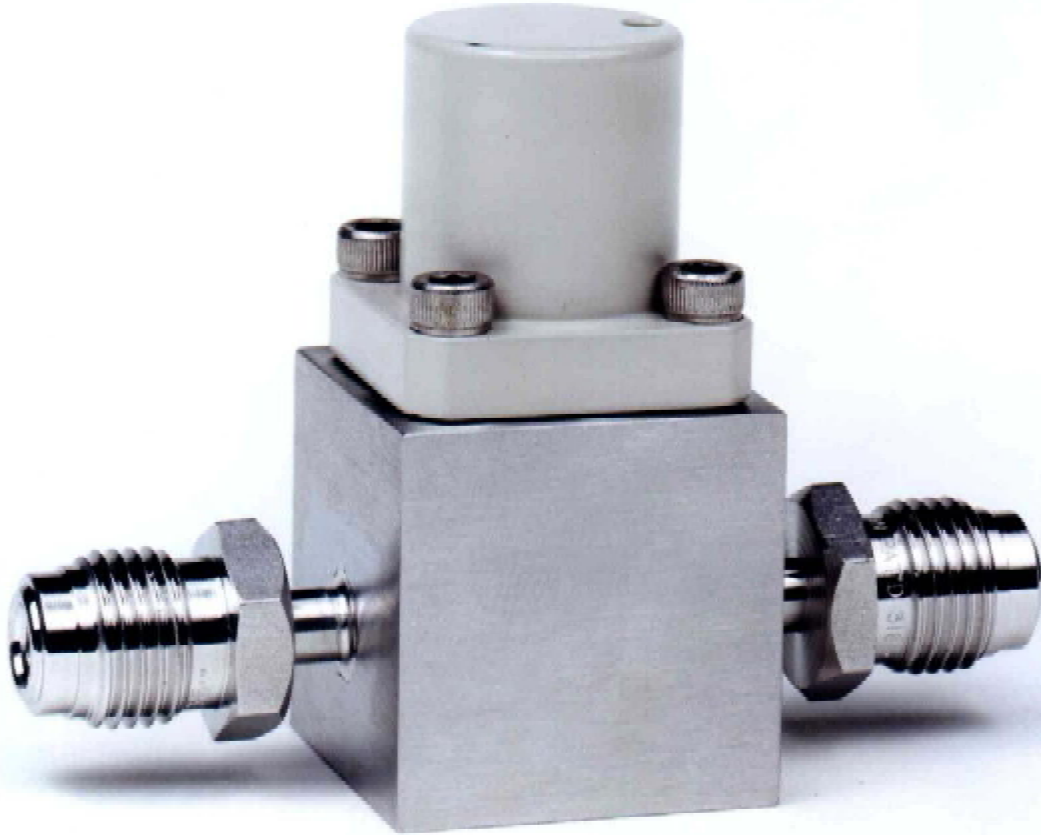


Electromagnetic Pressure & Flow Control Valve EMV100



- ***Fully adjustable orifice maintains shut-off integrity over extended periods***
- ***Replaceable orifice allows easy range changes***
- ***Low inertia provides fast response***
- ***Compatible with most pressure and flow controllers***
- ***Reduced seal count improves leak and long-term reliability***

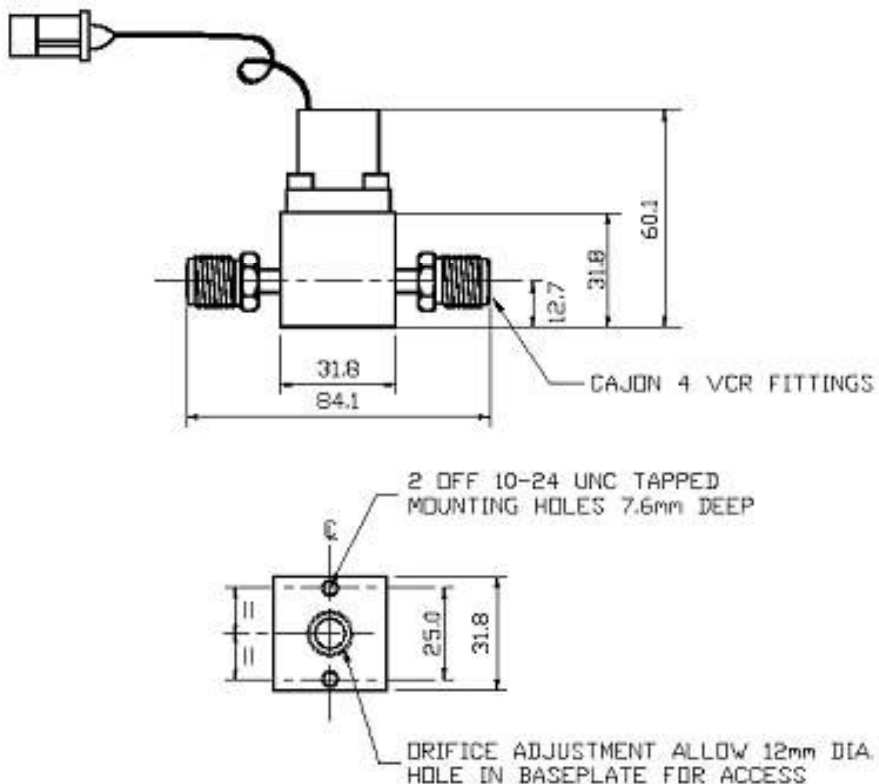
The Chell EMV is a development of the well-established Hastings flow controller valve and retains all of the advantages of this design. The internal dimensions are considerably smaller than other valves, which brings benefits such as smaller wetted surface area, lower mass and thus less armature inertia - faster response time and less overshoot.

The opportunity has been taken to reduce the number of seals and exposed screw threads, resulting in a cleaner, welded construction. The EMV may be used either as a system inlet controller or as an exhaust throttle valve.

The valve has an adjustable shut-off position, should the seal face become compressed over time – the orifice assembly may also be replaced easily without disturbing the pipeline connections. Flow ranges may therefore be changed at will by simple substitution of a different sized orifice assembly.

Parameter	EMV100
Operating principle	Proportioning, electromagnetic
Wetted Materials	S316 Stainless steel, Viton® * or Kalrez seals
Standard Fittings	4VCR male - others on request
Leak Integrity :	External <math> < 1 \times 10^{-9}</math> mb litre/sec
	Shut-Off <math> < 1 \times 10^{-7}</math> mb litre/sec
Electrical Drive Signal	0 - 14.5Vdc, 160mA
Flow Ranges - inlet config.. (for P>15lbf/in ²)	10, 50, 100, 500 sccm: 3, 5, 10 & 30 slpm
Flow Ranges - exhaust config.. (for P<15lbf/in ²)	As above, plus 50 slpm
Control Resolution	1×10^{-4} Full Scale
Storage Temperature Range	-20 to+70°C
Operating Temperature Range	0 to+50°C
Length across VCR faces	85 mm

*Viton® is a registered trademark of DuPont Elastomers



Chell Instruments Ltd
 Folgate House
 Folgate Road
 North Walsham
 Norfolk NR28 0AJ
 England

Tel.: +44 (0)1692 500555
 Fax: +44 (0)1692 500088

E-mail : sales@chell.co.uk

Web site : www.chell.co.uk